

Southwest Thought Partner Group

Meeting #4

Tuesday, July 7, 6:00 pm – 8:00 pm



Agenda

- Welcome and Introductions
 - Norms & Expectations
 - Charge and Deliverables
 - Q&A
- Overview of Culture and Leadership
- Teaching
- Education Program
- ELA (English Language Acquisition)
 - Consent Decree
 - Types of ELA Programs
- Next Steps and Q&A

Working/Meeting Agreements

- Please no side conversations
- No judgment, blame or shame
- Presume positive intentions
- Speak for ourselves; not entire community
- Start on time; end on time
- Specify on sign-in sheet if you prefer email or phone
- All documents will be translated
- Meetings will be conducted with simultaneous interpretation
- Stay focused on our charge and deliverables
- Make an intentional effort to honor every member's wisdom, experience, historical knowledge and desires
- What is missing?

Charge and Deliverables

Charge:

- Act as community **thought partners**, in collaboration with district leadership and applicant/current school leadership, **by providing specific pros and cons** of any school program proposal presented to the community for the 2016-2017 school year and beyond.

Deliverables:

By June 2015, FACE will deliver to DPS staff and make available to applicants the outcomes from high-level visioning in the 2 zones:

- Key qualities 4th grade families would like to see for a high-performing middle school at Henry during the 2016-2017 school year and beyond
- Key qualities families would like to see for a high-performing middle school to be co-located at Lincoln HS during the 2016-2017 school year and beyond

By September 8, 2015, the Thought Partner Group will have a written recommendation to district staff detailing:

- Specific pros and cons of any school program proposal presented to the community via the amended Call for New Quality Schools for the 2016-2017 school year and beyond



Questions



What Did We Hear?

Parents want to see:

- Bilingual teachers
- Teachers who believe in students
- Experienced, successful principal
- Professional development for leaders
- Restorative discipline programs and bullying preventing
- Culture of high expectations
- Social and emotional learning
- Opportunities for high academic performance
- Parent involvement process for decision making

Tour: What Did We See?

Teaching:

- Highly qualified
- Bilingual
- Culturally competent
- Enthusiastic

Leadership:

- Strong communications
- Friendly
- Clear goals and vision for school

Education Program:

- College preparation
- Technology
- Small classes
- Art, drama, music
- Tutoring
- Special education

Culture:

- Safety
- Motivated students
- Respect to students and by students
- Clean and inviting
- Volunteering

Governance:

- Parents and teachers included in the decisions of the school
- Clear expectations
- Student leadership program

Culture and Leadership Review

Leadership

- Role of the school leader
 - Decision-making systems and protocols
 - Communication with parents, staff and teachers, and students
 - Evaluation and Coaching
- Characteristics
 - Strong track-record of success

School Culture

- Parent Involvement
- Discipline Policy
- Classroom Management
- Student Investment or Engagement

What do we think is important for school culture and leadership?

- Leaders need to follow through on commitments and have strong support programs
- Leaders, parents, and teachers need to be united and “on the same page” (Communication is key)
- Multiple methods of communication regarding discipline and academics
- Shared value of friendliness and inclusion

Chris DeWitt

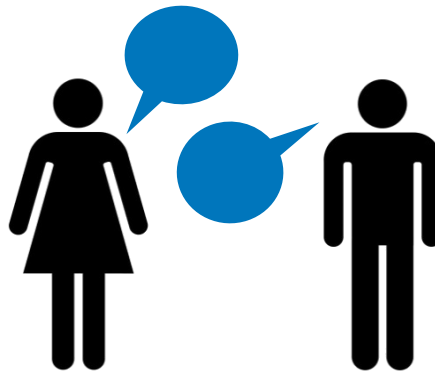
*Academic & Innovation Office
Denver Public Schools*

Teaching

What does the “Teaching” domain within the 5 Factors include?

- Teacher Recruitment, Hiring & Retention
- Teacher Coaching
- Teacher Evaluation
- Professional Development
- Pedagogy or “how teachers teach”

What do you look for in a good teacher?



Education Program

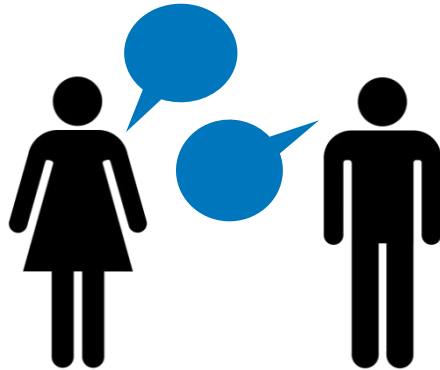
What does the “Education Program” domain within the 5 Factors include?

- Curriculum
- Assessment
- Academic Intervention and Acceleration
- ELL Instruction
- Special Education Instruction
- Cultural Competency

Education Program

What's important for kids to learn?

How do you know they've learned it?

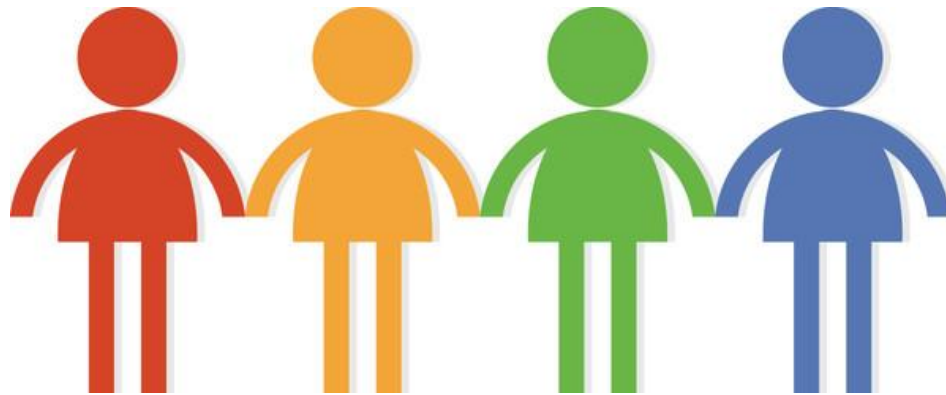


Jorge Robles

*Executive Director, Academic Achievement of
English Learners,
Denver Public Schools*

ELA Programs in middle schools

- Specialized instruction to support English language development
- As number of language learners in a school grows, supports grow to meet their needs



ELA Programs in middle schools

Dual Language:

- Students receive instruction in Spanish and English, with the goal of equal proficiency in both languages

Transitional Native Language Instruction (TNLI):

- Core content classes are taught in Spanish and English as students' English develops, with the ultimate goal of proficiency in English

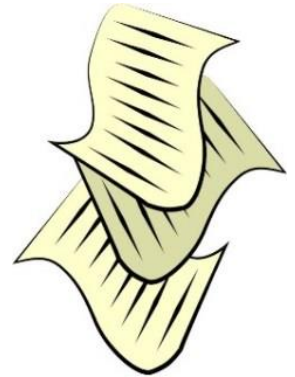
ESL Resource:

- Students receive special classes to support their English development. This teacher may be Spanish qualified.

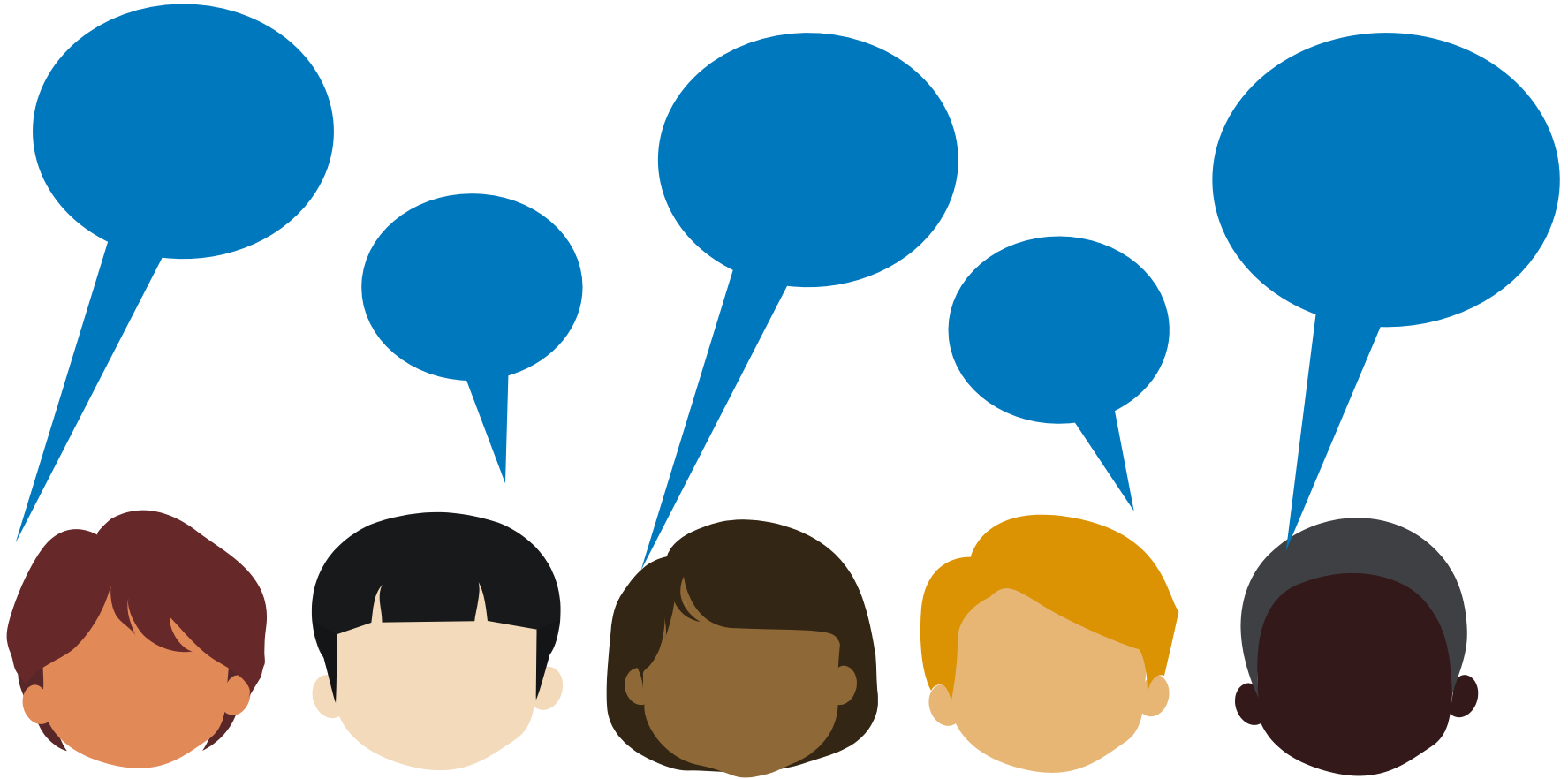
What is the DPS Consent Decree?

A legal agreement between DPS and the Congress of Hispanic Educators that outlines how DPS will support students learning English in DPS.

- Has been in effect for 30 years
- Monitored yearly by the Department of Justice, CHE and an independent Court Monitor



What do we think is important for Teaching, Education, and ELA Programs?



Timeline

April

» Meetings at elementary schools

May

» Call supplement is announced

» Thought Partner Group begins to meet

» School tours begin

June

» School applicants present to thought partner group; Thought Partners continue to meet

July

» Applicants present applications

August

» District reviews applications

September

» Thought partner groups present recommendations on school applications to the Board of Education

October

» Board of Education votes on new programs – September

November

» Board of Education votes on placement of programs

Tools and Next Steps



- Upcoming Topics:
 - July 11 – Applicants present to the TPG
 - July 21 – Governance and Facility (Budget)
 - August 4 – Parent Training on leadership and public speaking
 - September 1 – School tours to be determined
- Share information with families, neighbors, school community
 - Discuss how to share information
 - Visit our website: face.dpsk12.org
 - Call us with questions: 720-423-3054

