



Camden City School District

How can we best support students in our most-struggling schools?

Agenda

- Welcome
- Presentation
 - Camden City School District: Progress and Challenges
 - Moving Forward: Improving Most-Struggling Schools
- Public Comment
- Dinner and Discussion



**Our City.
Our Schools.
Our Future.**



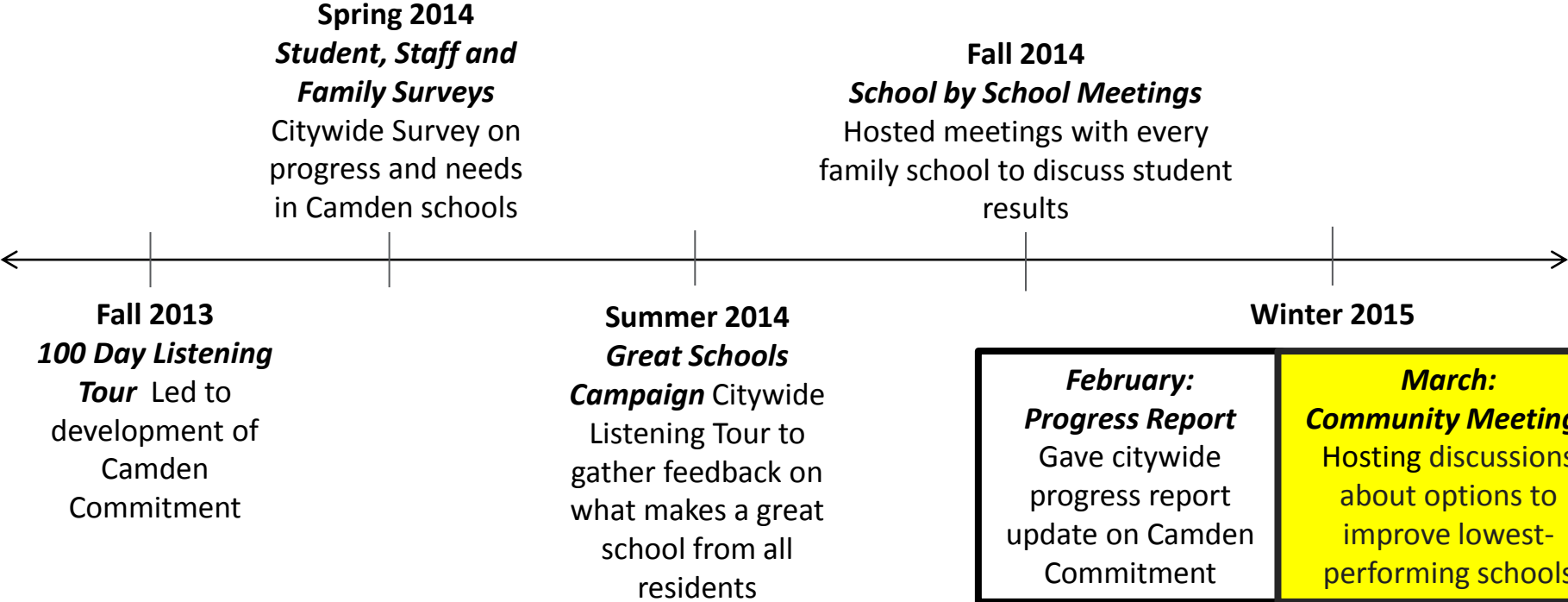
Agenda

- Welcome
- Presentation
 - Camden City School District: Progress and Challenges
 - Moving Forward: Improving Most-Struggling Schools
- Public Comment
- Dinner and Discussion



Camden Commitment

Our Approach – Community Engagement



Camden Commitment

Our Students are Remarkable

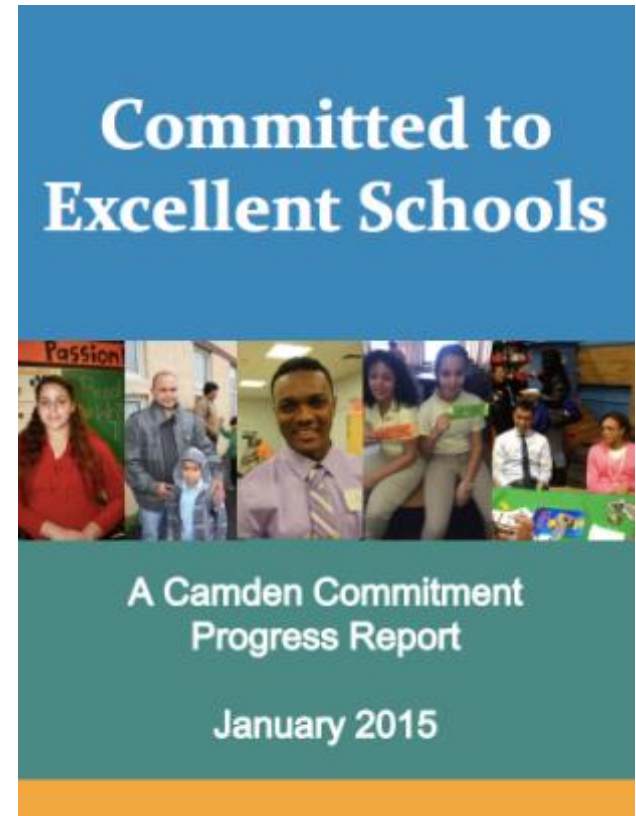


Camden Commitment

Camden Schools are Beginning to Reflect Their Students' Potential

For a year, we have been working together to fulfill the Camden Commitment, and we are making progress.

- New High-Quality Facilities
- More Early Learning
- Increased graduation rate
- Focus on Safety, Partnership with Mayor, CCPD
- New Technology in the Classroom
- Extra Support for Teachers and Principals



Camden Commitment

But Students Attend School in Buildings Constructed More Than a Century Ago

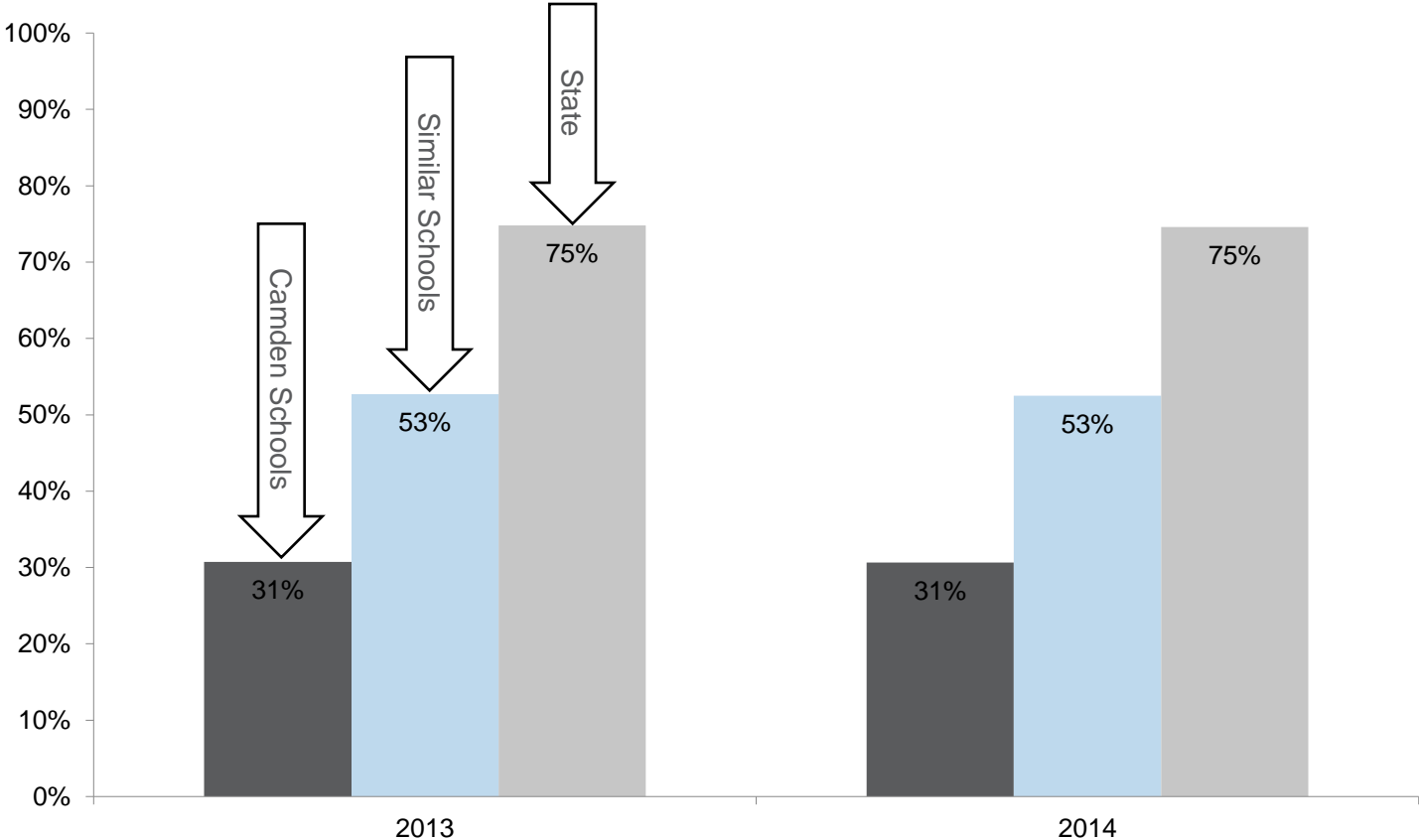
Half of District buildings were constructed before 1928



Camden Commitment

And Students in Similar School Districts Do Much Better than We Do

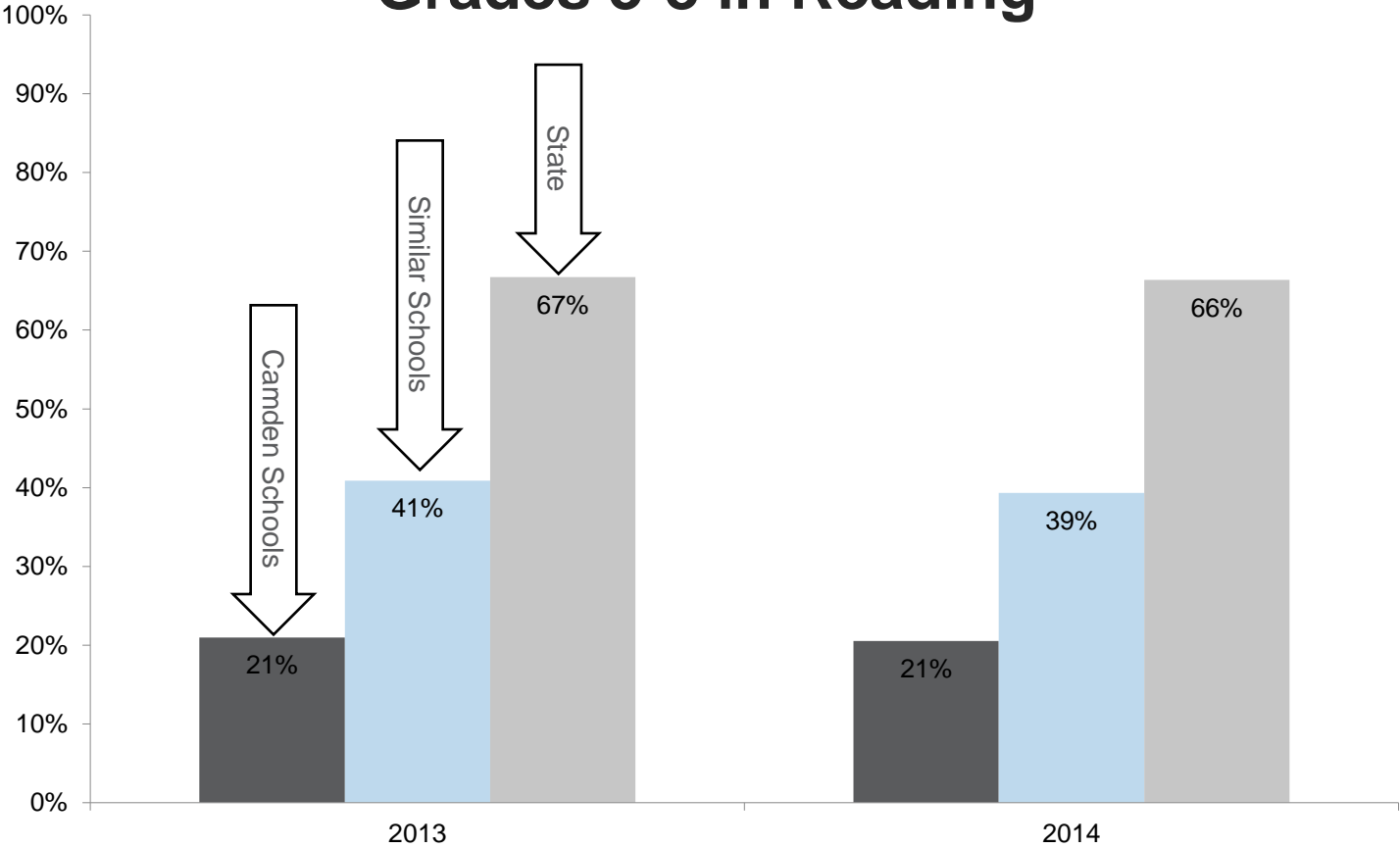
Grades 3-8 in Math



Camden Commitment

Students in Similar School Districts Do Much Better than We Do

Grades 3-8 in Reading



Agenda

- Welcome
- Presentation
 - Camden City School District: Progress and Challenges
 - Moving Forward: Improving Most-Struggling Schools
- Public Comment
- Dinner and Discussion



Camden Commitment

Our Approach – Supporting When Schools are Struggling Most

Many factors make a school great, so our reinvestment in struggling schools includes multiple parts:

Academics:

Prepare students for success in college and career

Parent Choice:

Address low and declining student enrollment

Facilities:

Modernize our school facilities for the 21st-century



Camden Commitment

Our Approach – Supporting When Schools are Struggling Most

School	English Language Arts & Math on Grade Level	English Language Arts Progress	Math Progress	Building Condition	Occupancy
Bonsall Family School	9%	Low	Low	Poor	Average
Cream Family School	8%	Typical	Typical	Poor	Average
East Camden Middle School	11%	Typical	Typical	Average	Below Average
Forest Hill Elementary School	13%	Low	Low	Poor	Good
Hatch Family School	7%	Low	Low	Below Average	Average
McGraw Elementary School	17%	Typical	Typical	Poor	Good
Molina Elementary School	7%	Typical	Low	Poor	Average
Pyne Poynt Middle School	6%	Typical	Typical	Poor	Average
Sumner Elementary School	9%	Low	Low	Poor	Good
Whittier Elementary School	10%	Typical	Low	Below Average	Good



Camden Commitment

Several Options Can Improve Most-Struggling Schools

We are exploring multiple opportunities to improve our most-struggling schools:



Camden Commitment

Several Options Can Improve Most-Struggling Schools, Including Renaissance Schools

Every renaissance school possesses the following characteristics:

Public Neighborhood Schools:

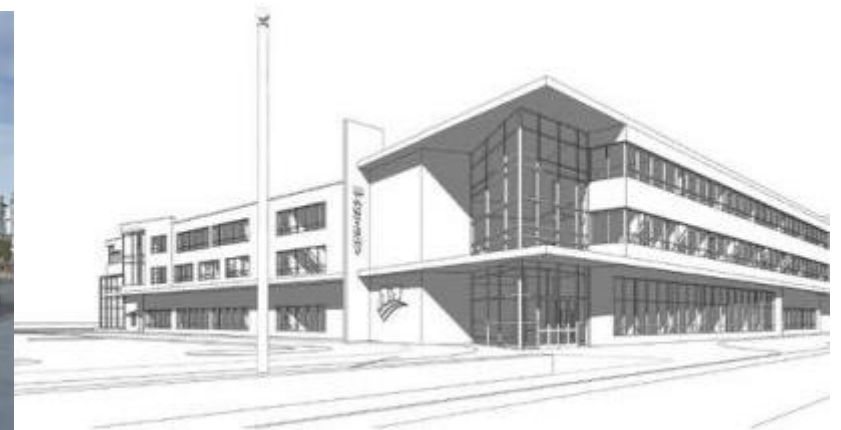
Renaissance schools are zoned to a neighborhood, so there is a seat for every child **INCLUDING** special education students and English language learners

Partnership Schools:

Unlike charters, renaissance schools have a contract with the District that mandates whole-child learning, wraparound services, community partnerships, and more.

21st-Century Facilities:

Each renaissance school is required to be newly constructed or significantly renovated, providing world-class facilities to students and communities.



Agenda

- Welcome
- Presentation
 - Camden City School District: Progress and Challenges
 - Moving Forward: Improving Most-Struggling Schools
- Public Comment
- Dinner and Discussion



Agenda

- Welcome
- Presentation
 - Camden City School District: Progress and Challenges
 - Moving Forward: Improving Most-Struggling Schools
- Public Comment
- Dinner and Discussion

